

WISEE MB-2 SOFTWARE & FIRMWARE

UPGRADE INSTRUCTION

Version - UPINST20090422MB2

Disclaimer: *ViseeO and ViseeO logo are registered Trademarks of Triamp Technology Ltd. The Bluetooth logo is a registered trademark of SIG, Inc. Any use of such marks by ViseeO is under license. All other brands, logo, and products are the property of their respective owners. They are solely used for identify the products and such use has no indication of any affiliation or relationship.*
Copyright 2009 Triamp Technology Ltd.

Item No.: POMB-2002

PREPARATION BEFORE YOU UPGRADE

1. Introduction

Thank you for using ViseeO MB-2 Bluetooth Upgrade Adapter for Mercedes Benz. Upgrading software and firmware on your ViseeO handsfree kit is easy. This instruction is designed to assist you completing the upgrade processes step by step. Please read all sections of the instruction booklet before you upgrade the unit.

2. Model Suitable

The following model is suitable for using this upgrade instruction:
ViseeO MB-2

3. Upgrade Requirements

To upgrade your ViseeO kit you will need two types of software:

1. Core upgrade platform – ***ViseeO Bluetooth Upgrade Platform:***

This is the program that will help you to upgrade the software or Bluetooth firmware on your unit. You will only need to install this program once.

2. The latest updates – There are two types of updates:

- ***Bluetooth firmware*** which is usually related to the compatibility with the latest mobile phones. Bluetooth firmware is available to download from time to time.
- ***CPU software*** which relates to the operating system of the car kit. This update is less updated than Bluetooth firmware.

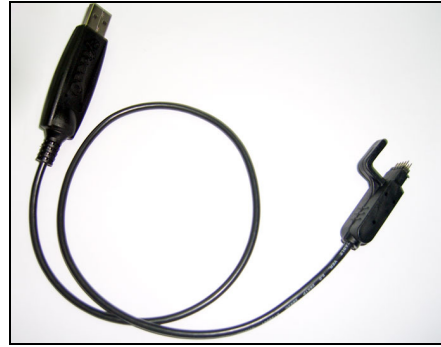
To upgrade your ViseeO device you will also need the following hardware:

1. A computer running Windows XP SP2 or Windows Vista with USB 2.0 support.
2. Access to Internet connection.
3. A standard USB to mini USB cable for Bluetooth firmware upgrade.

4. A special designed USB cable for CPU software upgrade.



Standard USB to mini USB Cable



Special designed CPU upgrade cable

4. Download and Installing ViseeO Upgrade Platform

(You can ignore this section if you have already install this program Before)

STEP 1: Please download the **ViseeO Upgrade Platform** from the download section of ViseeO's official website at:

<http://www.viseeo.com/>.

Note: The download **Username** and **Password** are both: **customer**.

STEP 2: Unzip the file and double click on **ViseeoSetup.exe** to begin the installation. Follow all steps required to complete the installation. This program will create a short-cut icon on your desktop named **Viseeo Bluetooth Upgrade Platform**.

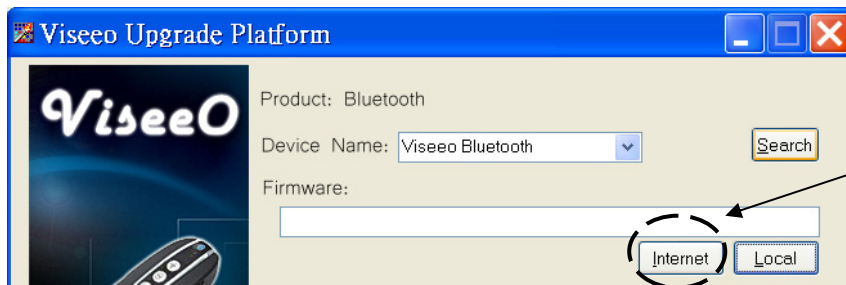


Viseeo Bluetooth Upgrade Platform Icon

5. Download the Updates

You can download both CPU and Bluetooth updates from our website's download zone (<http://www.viseeo.com/>). Please note there are two types of updates. If you need to upgrade Bluetooth you should download the **MB-2 Bluetooth Firmware Update**. If you require CPU software update you should download **MB-2 CPU Software Update**. Please rename the file before you save it so you can find it easily. After download the file you will need to unzip the file in order to use it.

Note: The upgrade platform itself provides automatic updates downloads from Internet by clicking Internet button. This function is subject to availability therefore, please check our website before using this function.



Please check ViseeO Website before using this function!

6. Installing the Drivers for Your MB-2 Device

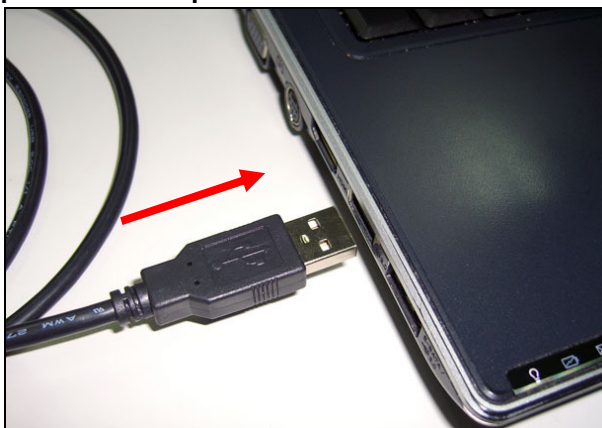
You may be required to install the driver for your MB-2 on your computer before the actual upgrade can be carried out. To install driver, please use the **standard USB to mini USB cable** provided and follow the steps below:

STEP 1: Plug the mini USB to the Bluetooth upgrade port of MB-2 located at top end of the unit.



Plug the mini USB connector into the Bluetooth upgrade port

STEP 2: Plug the USB connector to the computer. After you plug the cable in you should see the LED lights on MB-2 start to flash together indicating MB-2 is powered up.



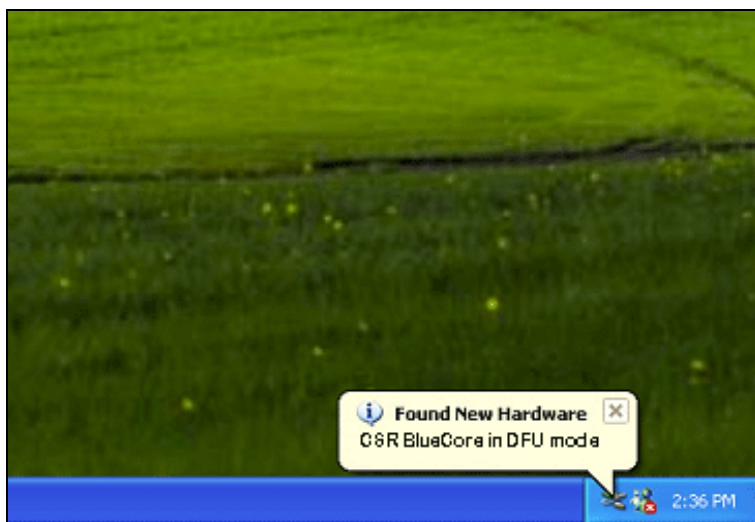
Plug the USB connector into the USB port on your computer

STEP 3: As soon as you see the light powered on press the 1st button (Pairing button) on your MB-2 to activate the device for Windows to detect it.



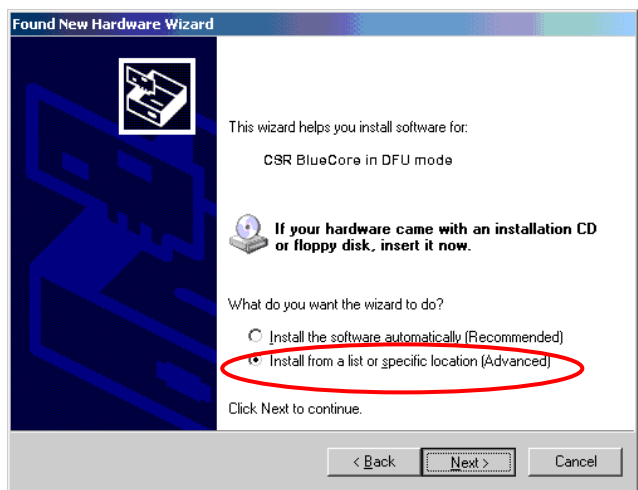
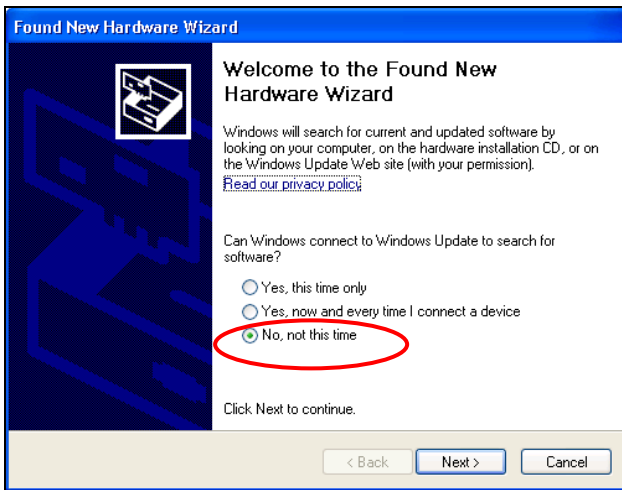
Note: MB-2 LED lights will flash together for a while before flashing one by one in order. You must press the 1st button before the LED lights change to flash one by one in order to notify Windows the existence of your hardware.

Immediately after the device is activated you should see the new hardware found message appearing on the bottom right corner of your Windows XP (or Vista) screen.



New Device Found

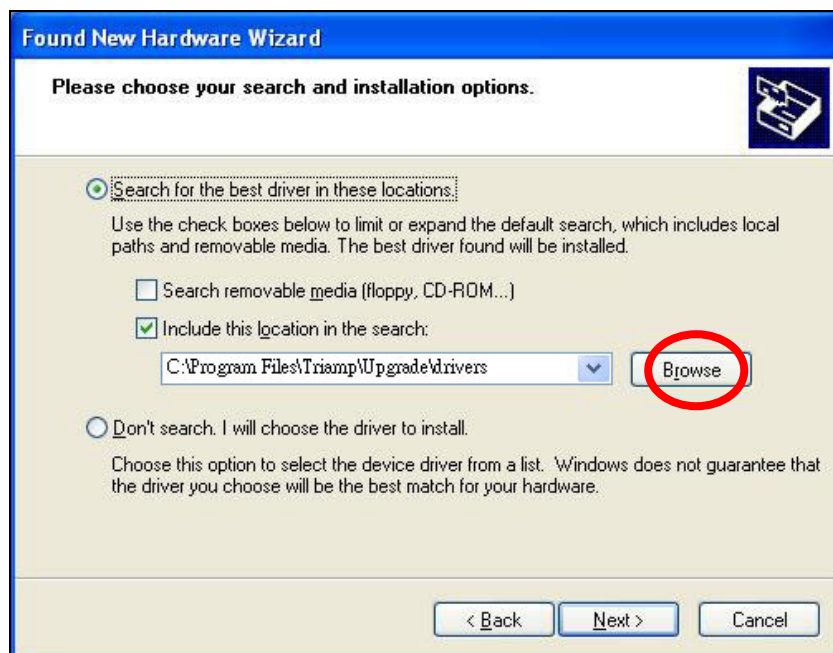
STEP 4: Launch the **Found New Hardware Wizard**. There are two types of new found hardware wizards for Windows XP depending on your Windows version. Both wizards can help you install the drivers for your MB-2. Please follow the next steps.



There are two types of New Found Hardware Wizard Windows

STEP 5: Select *No, not this time* or *Install from a list of specific location (Advanced)* after launch the wizard. Click *Next* to continue.

STEP 6: Select *Search for the best driver in these locations* and tick the *Include this location in the search* option only. Browse and select the folder located in: *C:\Program Files\Triamp\Upgrade\drivers*



STEP 7: Click *Next*. Click *Continue Anyway* if your Windows pop up a message indicating that the software you about to install has not passed Windows Logo testing to verify its compatibility with Windows XP (or Vista).



STEP 8: When the driver installation is finished click **Finish** to close the installation windows



Now you are ready to upgrade the latest Bluetooth updates on the unit (See Section 8 for Bluetooth installation)

7. Installing the CPU Upgrade Cable Driver

To update MB-2 CPU software you will need a custom made **CPU upgrade cable** as show in the picture on page 3.

As this is a custom made cable you will need to install the driver for this cable before you use. To install the driver:

STEP 1: Download the *CPU upgrade cable driver* from our website's download zone: <http://www.viseeo.com/>.

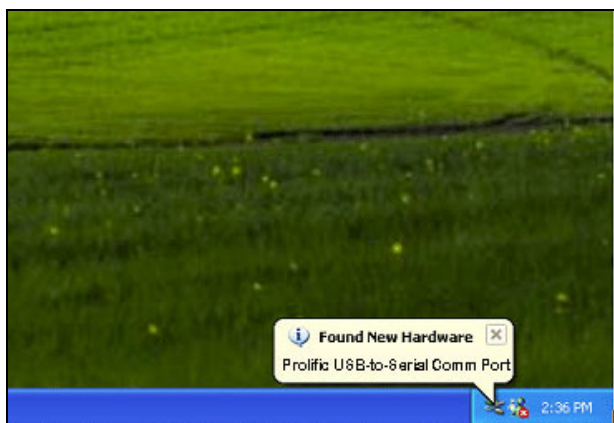
STEP 2: Unzip the file and double click on *PL2303_Driver_XP2K_v204102.exe* (or "PL2303_Prolific_Vista_332102" for Vista Windows) to install the driver.

STEP 3: When installation is completed plug the 10-pin connector into the CPU upgrade socket at the back of the MB-2. Make sure it is gently connected in the direction as the picture shown below.



Gently plug the 10-pin connector into the CPU upgrade ports in the direction as shown

STEP 4: Plug the USB connector into your computer. As soon as it is connected Windows should show a new hardware found message and *Prolific USB-to-Serial Comm Port* hardware automatically installed.



INSTALLING BLUETOOTH FIRMWARE UPDATES

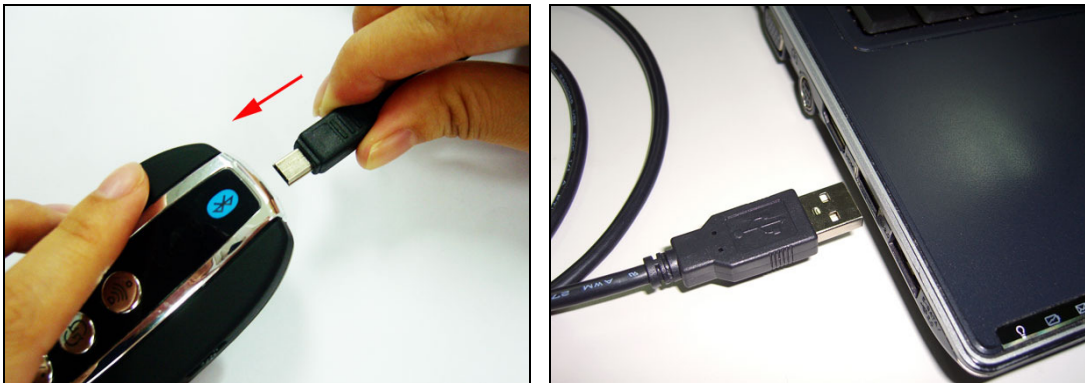
8. Installing the Bluetooth Firmware

To install new Bluetooth firmware you will need the **standard USB to mini USB cable**.



Standard USB to mini USB cable for Bluetooth upgrade

STEP 1: Plug the mini USB connector into the Bluetooth upgrade port at the top end of your MB-2 and USB connector to your computer.



Plug the mini USB connector into the Bluetooth upgrade port on your MB-2 and USB connector to computer

Note: Mini USB connector must be plug into MB-2 before you connect the USB to your computer.

STEP 2: Soon after you plug the USB into your computer MB-2 should be powered up and all LED lights start to flash together at the same time. Press the 1st button (Pairing button) on your MB-2 to enter the Upgrade mode.

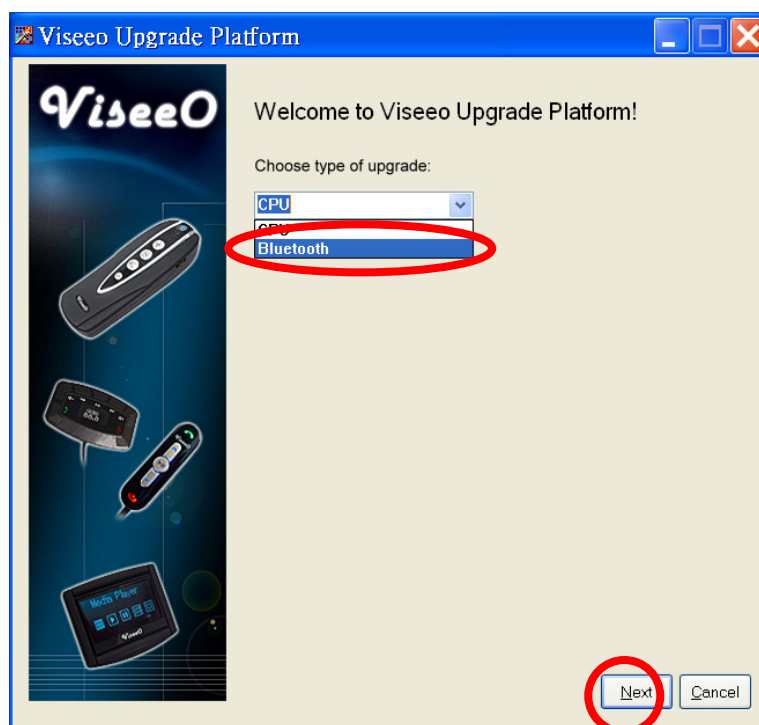


Note: MB-2 LED lights will flash together for a while before flash one by one in order. You must press the 1st button before the LED lights change to flash one by one in order to enter upgrade mode.

STEP 3: Double click the **Viseeo Bluetooth Upgrade Platform** icon on your desktop to open up the program.



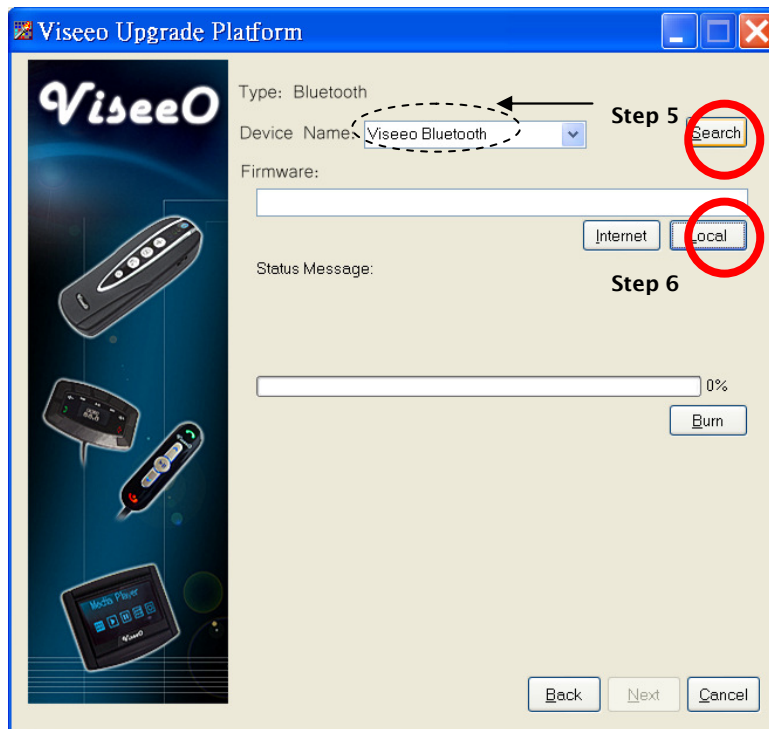
STEP 4: Choose **Bluetooth** to upgrade and click **Next** to continue.



STEP 5: Click **Search**. This should automatically identify your device. If the name is not shown after click please make sure you have installed the driver correctly.

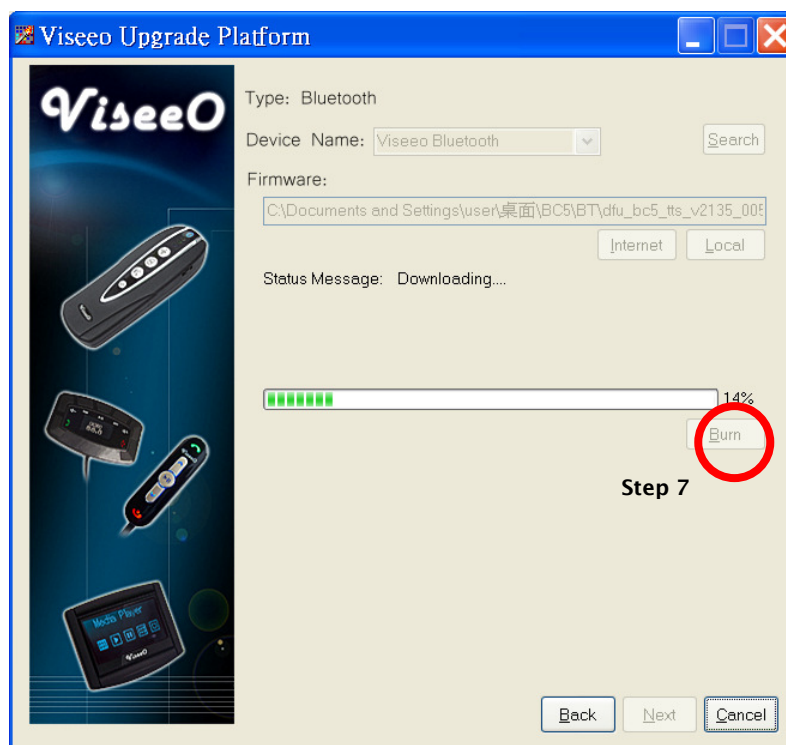
STEP 6: Click **Local** to browse and open the latest Bluetooth firmware update you have downloaded from Viseeo's website (See Section 5 for further information).

Note: You can also perform automatic Internet search and download the update by clicking "Internet" next to the "Local" button. This function is subject to availability. Please check www.viseeo.com for further information.



STEP 7: Click **Burn** after you have selected the update file (for example: dfu_bc5_tts_v2135_005.usb).

Note: After the Bluetooth upgrade is completed MB-2 will leave the upgrade mode. If you would like to install the firmware again you must re-enter the upgrade mode first (see STEP 2).



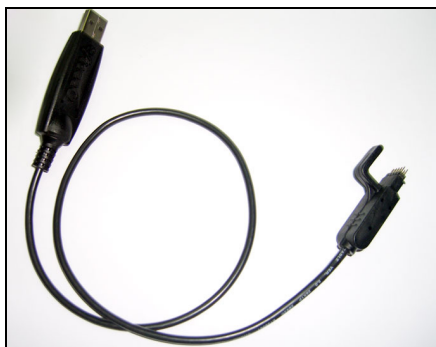
STEP 8: When the **Status Message** reaches 100% click **Cancel** to close the program.

STEP 9: Unplug the USB from your computer first and then follow by the mini USB from your MB-2. Your update is now completed. You can take the unit back to your car to pair with your phone again.

Note: After you have updated the firmware it is advised that you master reset the unit and redo pairing. After powering up the unit in your car press and hold the second button (Sync button) for 5 seconds at least follow by pressing the 4th button (power reset button) while still holding the Sync button. Release both buttons together. The LED lights on your MB-2 should start flashing in order for a while then only the white Pairing LED light will flash on its own indicating that the MB-2 has entered the pairing mode ready for pairing with your mobile phone.

INSTALLING CPU SOFTWARE UPDATES

9. Installing the CPU Software Updates



Special designed CPU software upgrade cable

STEP 1: Plug the 10-pin connector into the CPU upgrade socket at the back of the MB-2. Make sure it is connected as the picture shown below.



Gently plug the 10-pin connector into the CPU upgrade ports in the direction as shown

STEP 2: Plug the USB connector into your computer.

Note: Please make sure you plug the 10-pin connector into MB-2 before you connect to your computer's USB port.

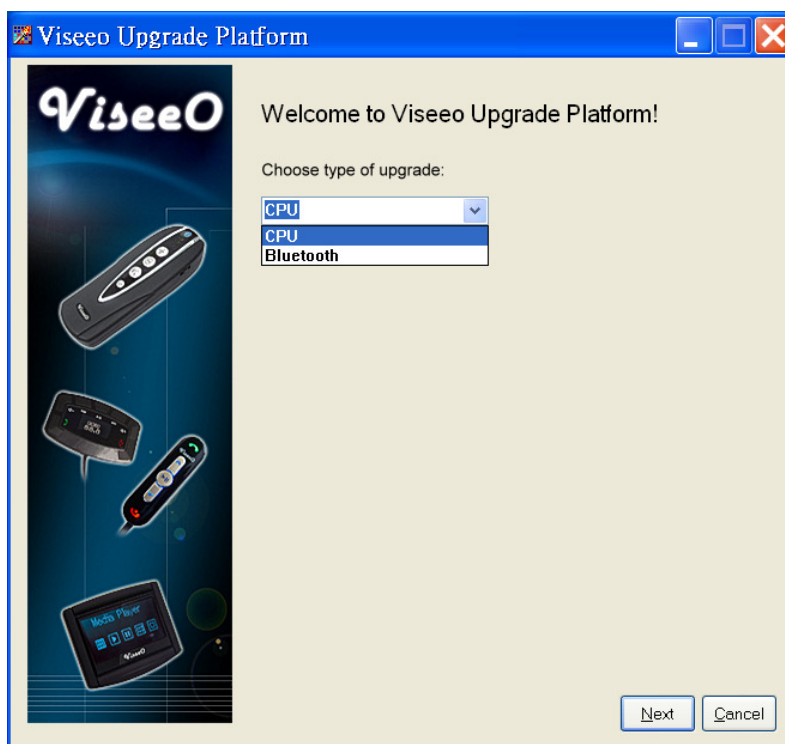


Plug the CPU upgradeable USB connector into your computer

STEP 3: Double click the **Viseeo Bluetooth Upgrade Platform** icon on your desktop to open up the program.



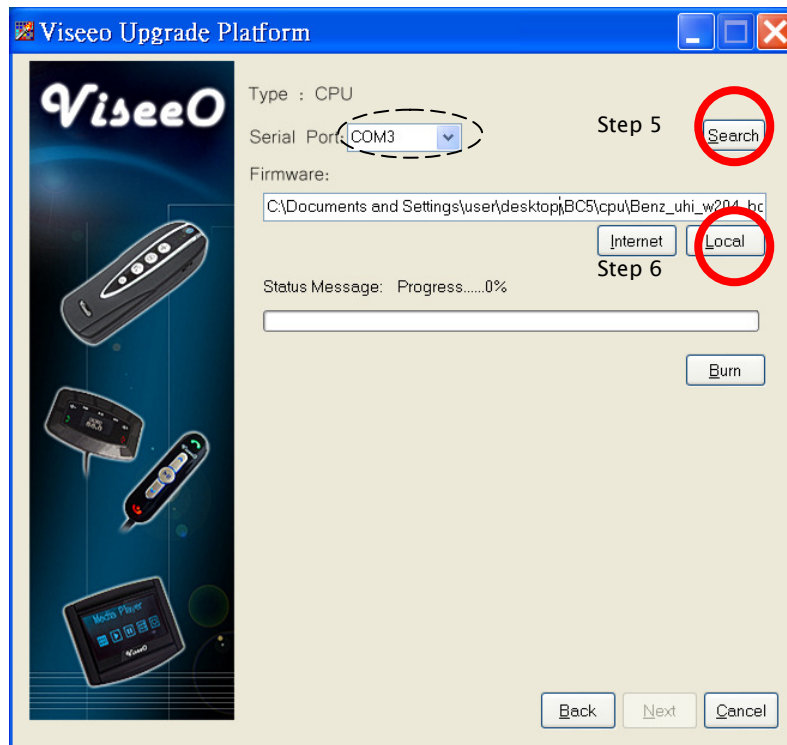
STEP 4: Choose **CPU** and click **Next** to continue.



STEP 5: Click **Search**. The computer will automatically search if your upgrade cable is at the right COM port number.

Note: if your computer can not find the right COM port please also make sure the CPU upgrade cable driver is installed correctly. If you have already installed the driver correctly, there is a

possibility that the COM port number assigned is not recognized (i.e. COM 9 or over). You will need to manually configure this. Please see Appendix to see how to configure it.



STEP 6: Click **Local** to browse and open the latest CPU software update you have just downloaded from ViseeO’s website. (See Section 5 for further information)

Note: You can also perform automatic Internet search and download the update by clicking “Internet” next to the “Local” button. Subject to availability please check www.viseeo.com for further information.

STEP 7: Click **Burn** to begin upgrading your software. When the **Status Message** reached 100%, a message indicating that “the CPU software has been upgraded successfully” will pop up. Press **OK** to close this message and then click **Cancel** to close the program.

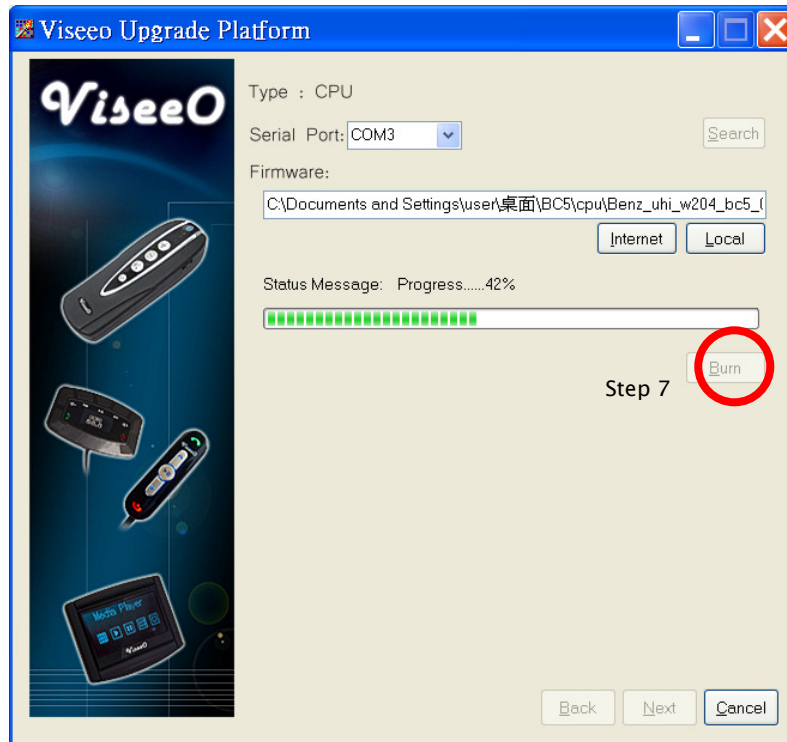
Note: Please do not unplug the cable before you click the “OK” for the message windows which indicates the software update is successful.

STEP 8: Unplug the USB from your computer first before you unplug the 10-pin connector from your MB-2. Now you are ready to take the MB-2 to your car for use.

Note: After you have updated the CPU software it is advised that you master reset the unit and redo pairing. After powering up the unit in your car press and hold the second button (Sync button)

MB-2 UPGRADE INSTRUCTION

for 5 seconds at least follow by pressing the 4th button (power reset button) while still holding the Sync button. Release both buttons together. The LED lights on your MB-2 should start flashing in order for a while then only the white Pairing LED light will flash on its own indicating that the MB-2 has entered the pairing mode ready for pairing with your mobile phone.



CHECKING SOFTWARE VERSION

10. Checking MB-2's Software & Firmware Version

You can check the software and firmware version of your MB-2 at any time. To check the software and firmware version:

STEP 1: Pair and connect your phone with MB-2.

STEP 2: Press & hold first and second button together until the Mercedes Benz Comand System screen displays a serial number in a format such as:

	0 2135	005	020
Explanation:	Bluetooth	version	CPU version

APPENDIX

Manually Configure COM Port for CUP Upgrade Cable

If your CPU upgrade cable is assigned a COM port number larger than 8 it will become unrecognizable therefore, you will need to manually configure the COM port number so it can work properly. First you need to check the COM port number:

STEP 1: Go to **Control Panel** and open up **System** properties.

STEP 2: Select the **Hardware** tab.

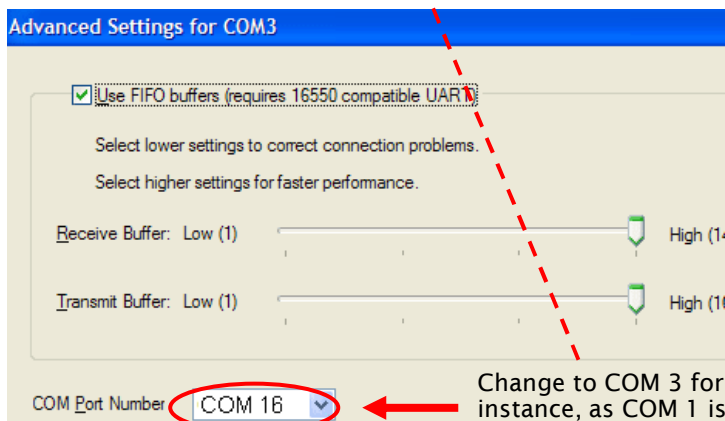
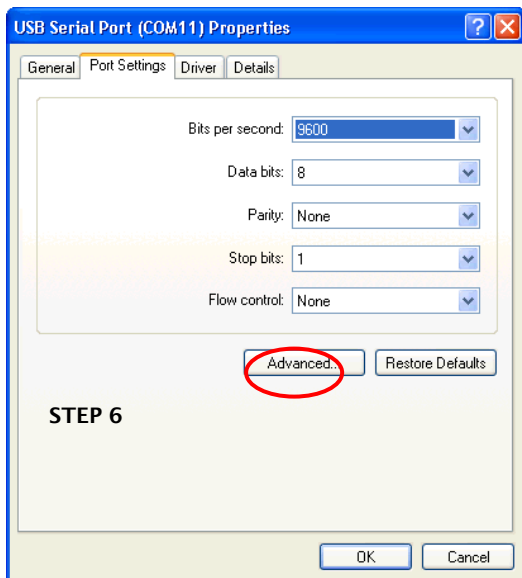
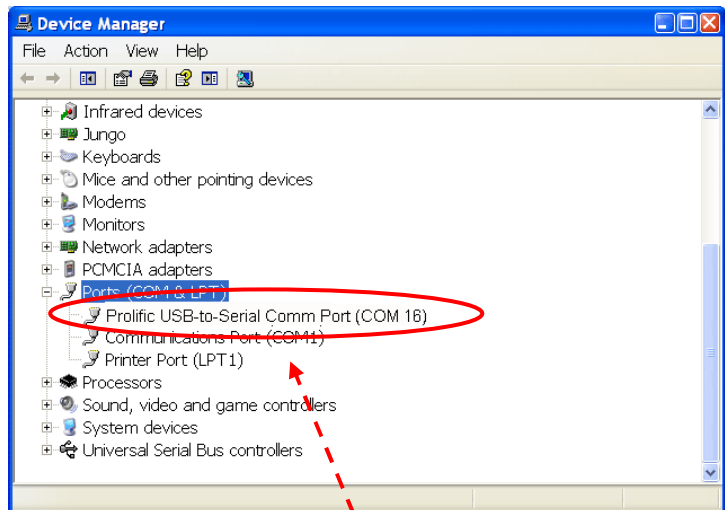
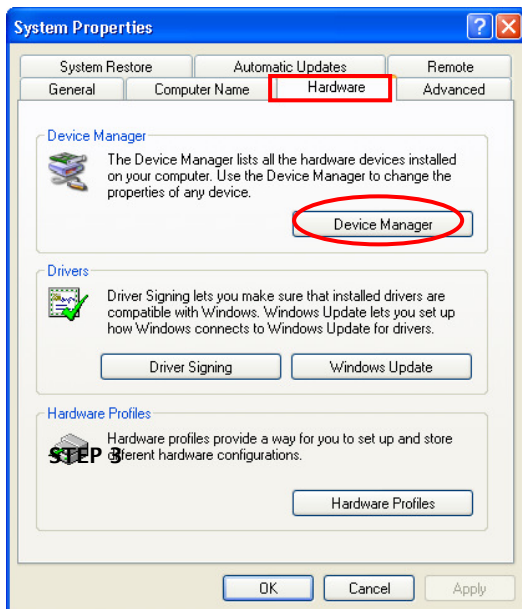
STEP 3: Click **Device Manager**. Go to **Ports** section and expand it. It should display all the COM ports and LPT ports in use. Please check if **Prolific USB-to-Serial Comm Port**'s COM port number is larger than 8.

STEP 4: If **COM port** number is larger than 8, right click this item and select **Properties**.

STEP 5: Select **Port Settings** tab. Click on **Advanced** and in the **COM Port Number** section change the number to any number between 1~8 as long as that **port number is not in use**.

STEP 6: Click **OK** when you have changed the number.

STEP 7: Click **OK** again to close the **Port** properties Windows.



If you have any further technical query please do not hesitate to contact us at www.viseeo.com
 Copyright 2009 Triamp Technology Ltd.