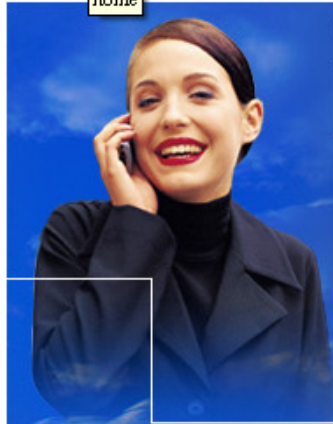


MBU CPU upgrade Instruction Guide

Please go to www.triamp.com.tw
[Download] section for software download.

- Download the software driver :“[CK/MBU CPU Software Upgrade Platform Ver. 2.0](#) “
- Download the latest CPU software.
- Unzipped both CPU software driver and latest CPU software files
- Save the files on the computer desktop or into any file folder that is easily located.

Account: customer
Password: customer



Triamp
Technology,
Ltd.

DOWNLOAD

[Note: In order to power up the MBU and do the upgrade, it requires a Nokia 6230/6310 charger. If you don't have the charger, please purchase in any electronic/ mobile stores.]

[Page 1] Count : 9

▶ Pre-installation Software

▶ *CK/MBU Bluetooth Firmware Upgrade Platform (1.22MB) - Must install for the first time

▶ *CK/MBU CPU Software Upgrade Platform Ver. 2.0 (182KB) - Must install for the first time

▶ CK250

▶ CK380

▶ CK390

▶ CK391

▶ MBU-1000

▶ MBU-2000

▶ Upgrade Instructions and Other Guides

▶ Marketing and Promotion

Software Driver

Software Version

PRODUCTS

▶ Bluetooth Handsfree car Kits and Upgrade Kits

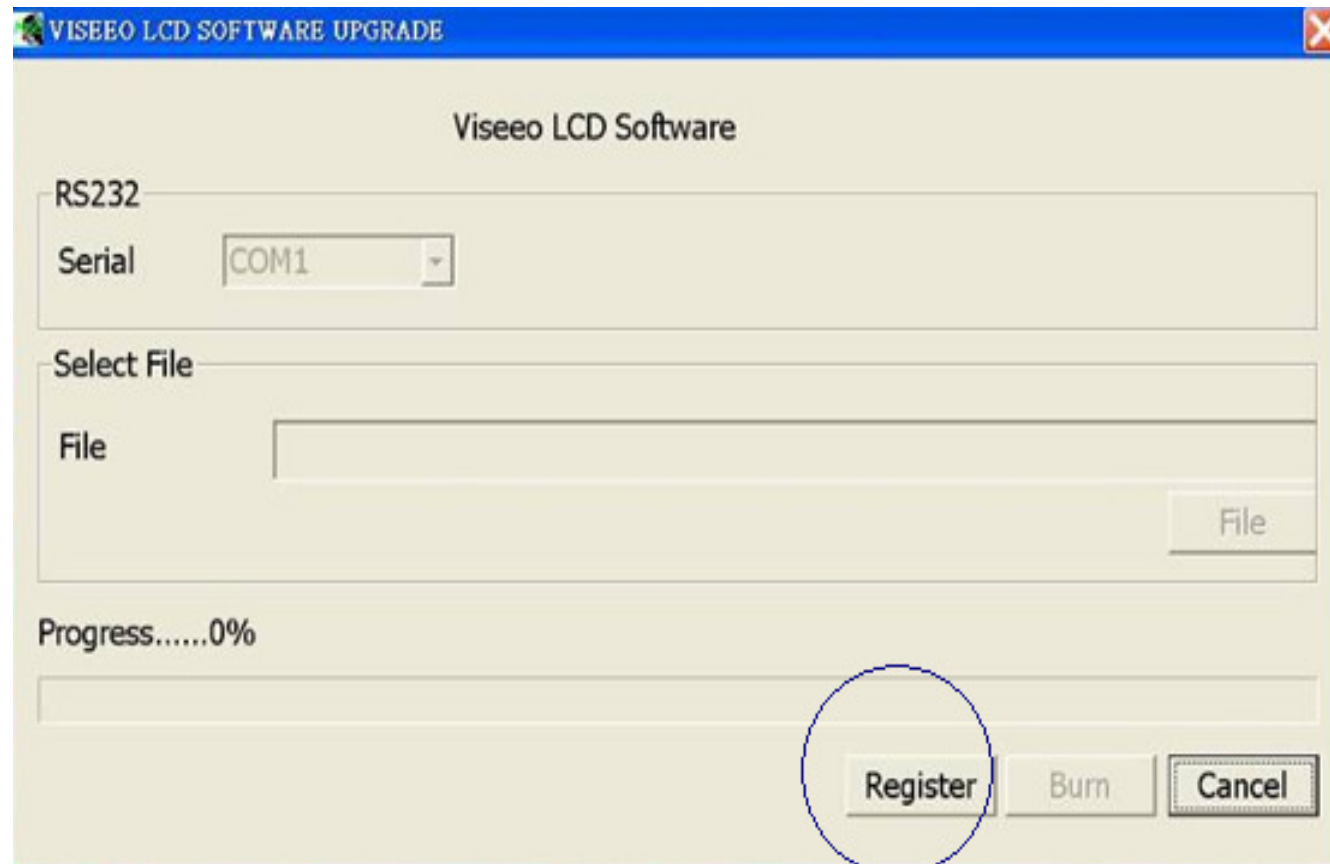
▶ Non-Bluetooth Handsfree car Kits and Upgrade Kits

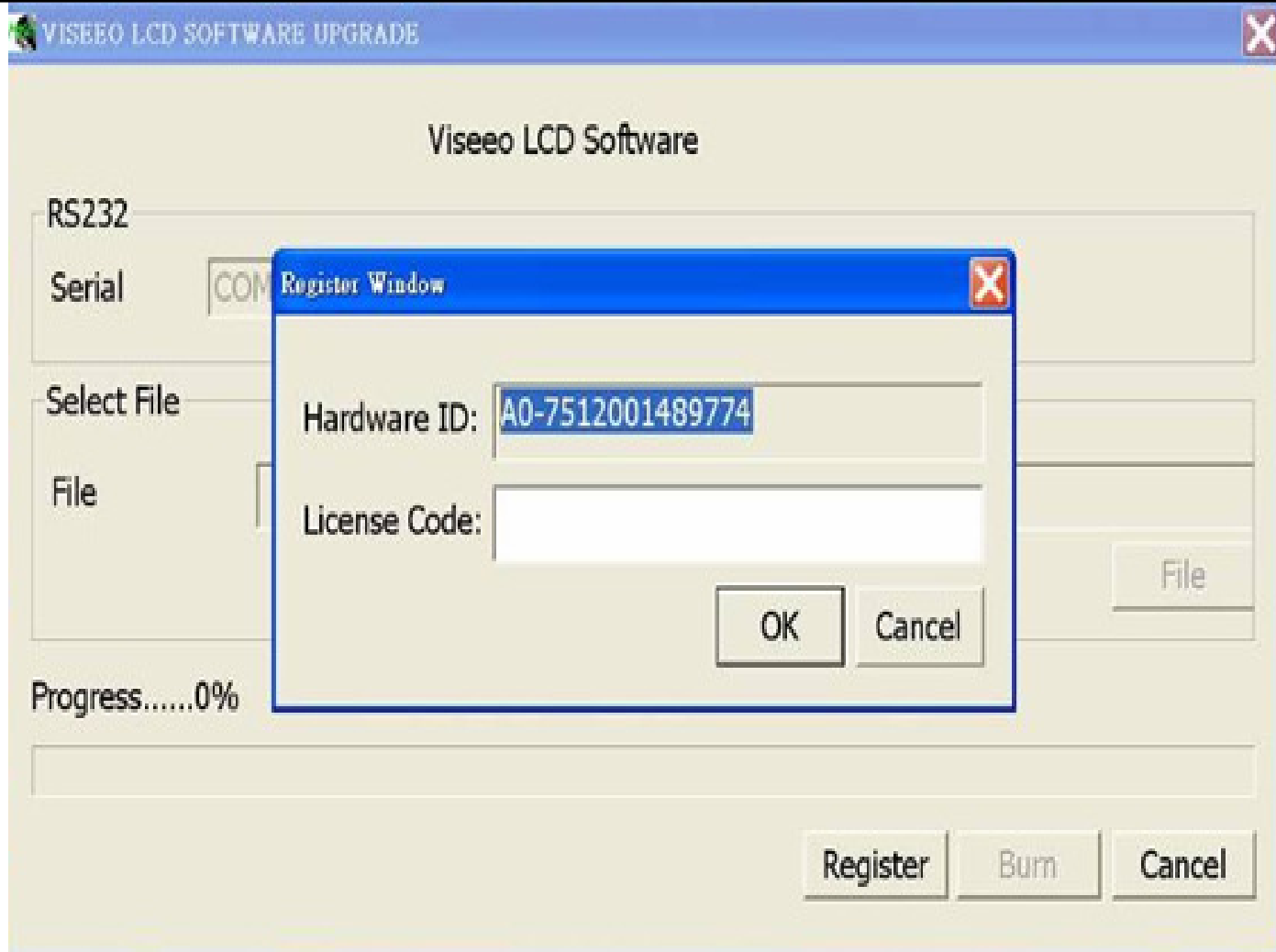
▶ Handsfree Car Kits Optional Accessories

Step 1 : Double click on Software driver file “Flashupgenc_V2.0”



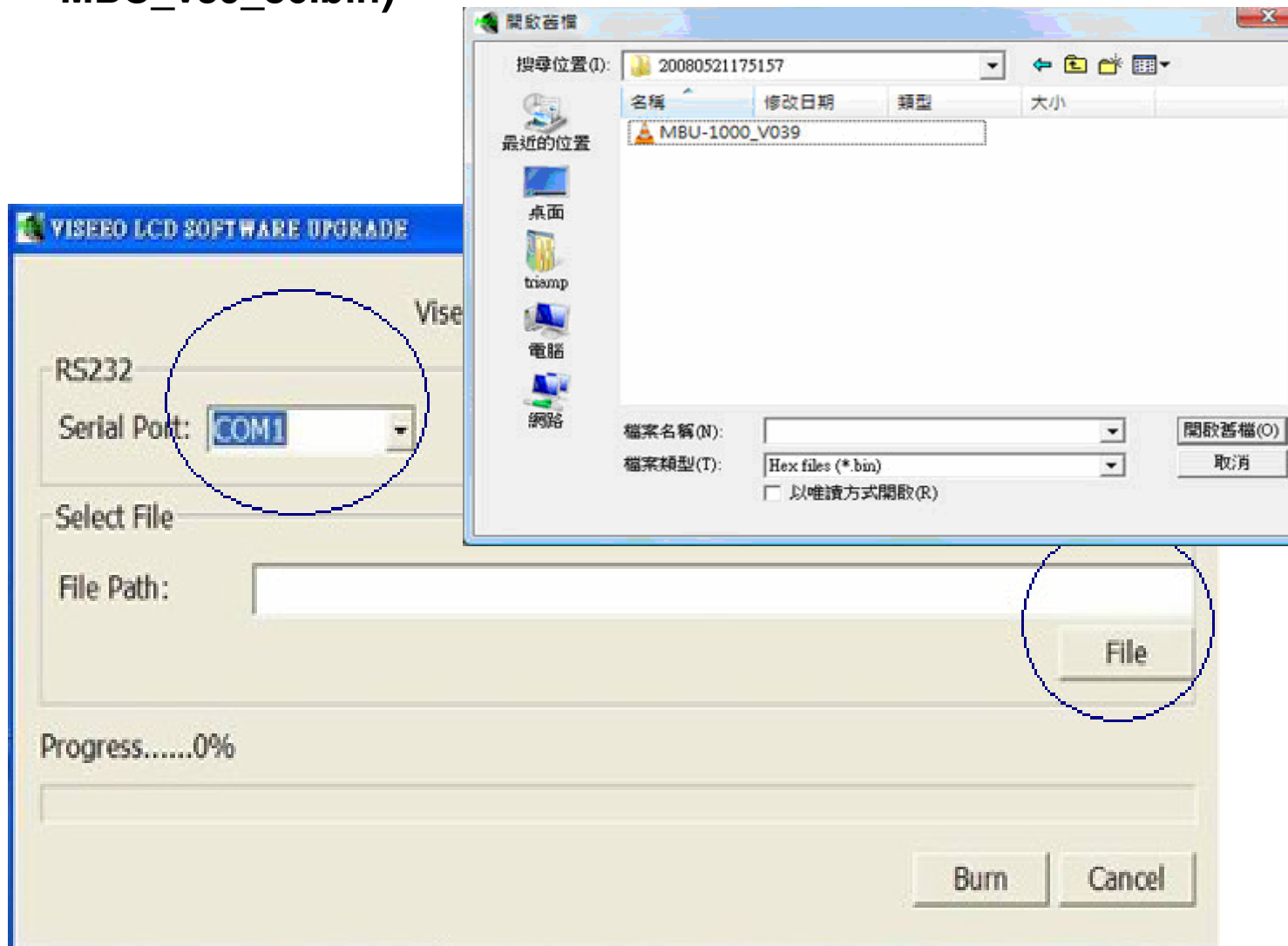
Step 2 : Click on “Register” and a window with a Hardware ID will pop up. Please copy and paste the ID and email to sales@triamp.com.tw. We will give you a License Code in return.

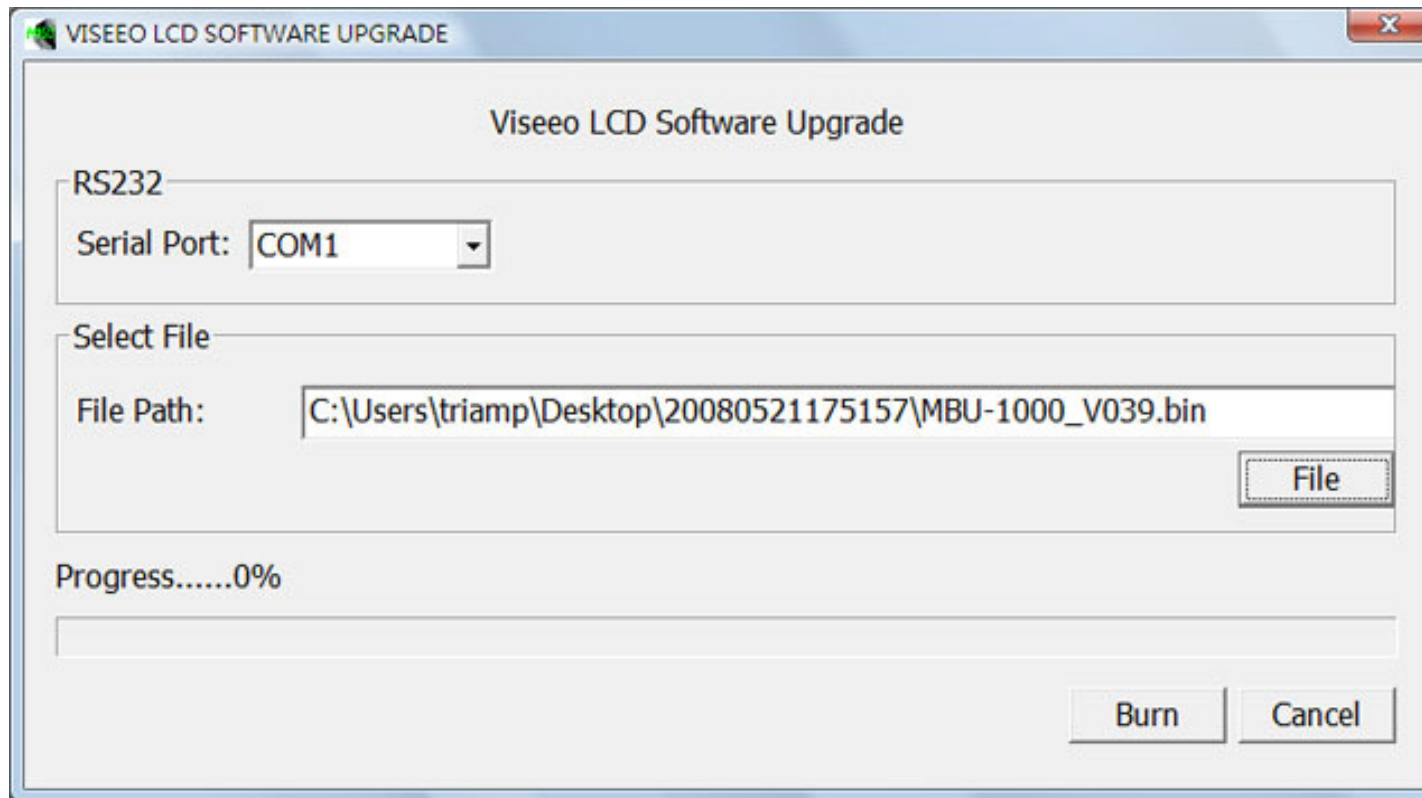




Step 3: Enter the License Code and click “OK” to continue.

Step 4 : Please select COM1 under Serial Port and make sure the CPU software is ready. Click on “file”, and select the latest CPU software (For example: MBU_v39_86.bin)





**...Now ready to connect the
cables**

Note : CPU Upgrade Cable set includes: upgrade cable, special connector, a standard Nokia charger (a Nokia 6230/6310 charger can be purchased in any electronic/mobile stores)



When doing upgrade, please do the following steps

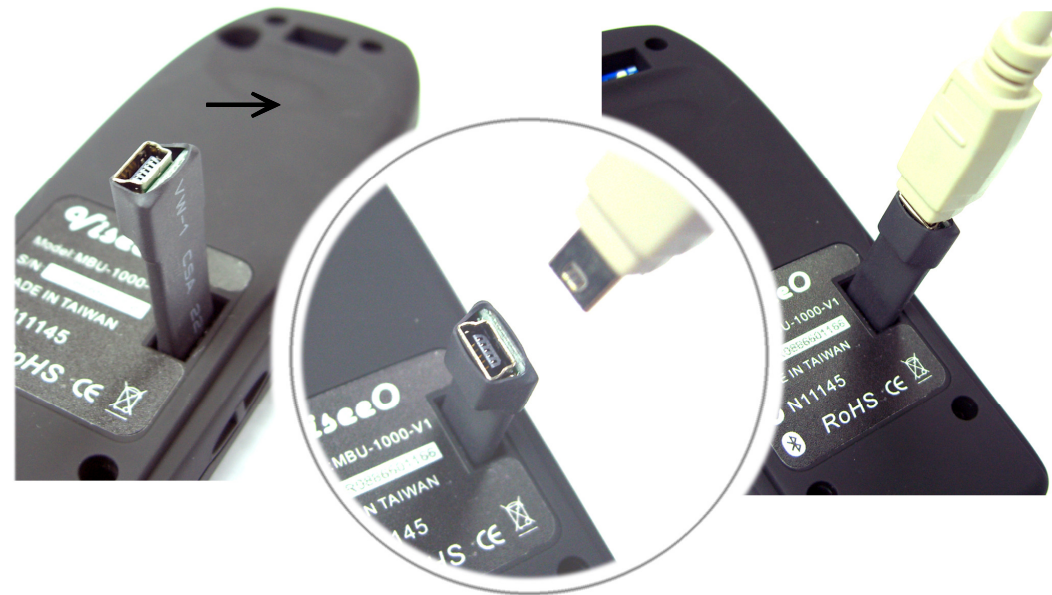
1. Plug the serial port connection end into the computer serial port.



2. Take off the cover at the back of MBU unit

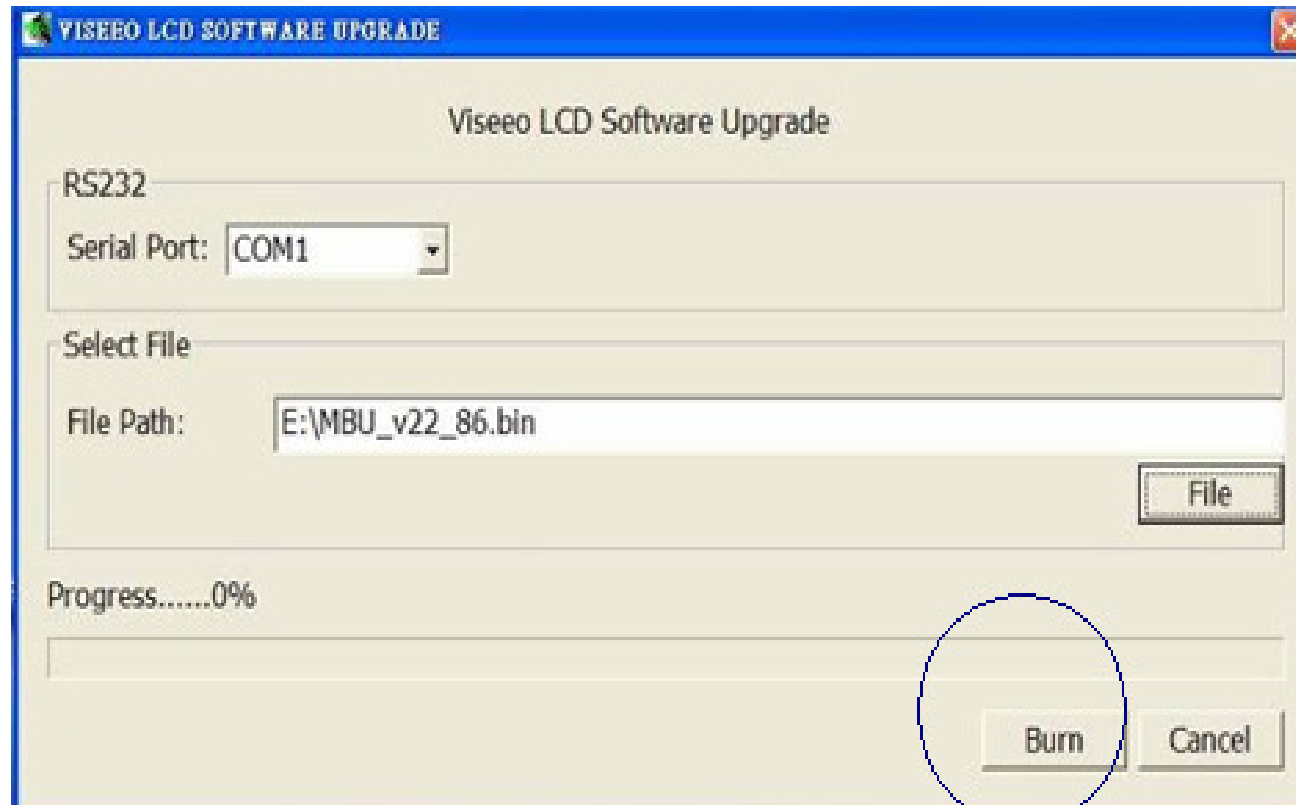
3. Plug the special connector to the back of your MBU unit

(NOTE: The flat side of the special Connector should be facing edge of MBU as arrow shows)



4. Power up MBU with a standard Nokia charger. *(Please note: DO NOT power up MBU before the upgrade cable is connected and the light on MBU SHOULD NOT flash after powering up)

Step 5: Ready to “Burn”.



Step 6: When you reach 100% completion please unplug the Nokia Power first and follow by the upgrade cable.

**Awesome! you have complete
the upgrade.**

THANK YOU!